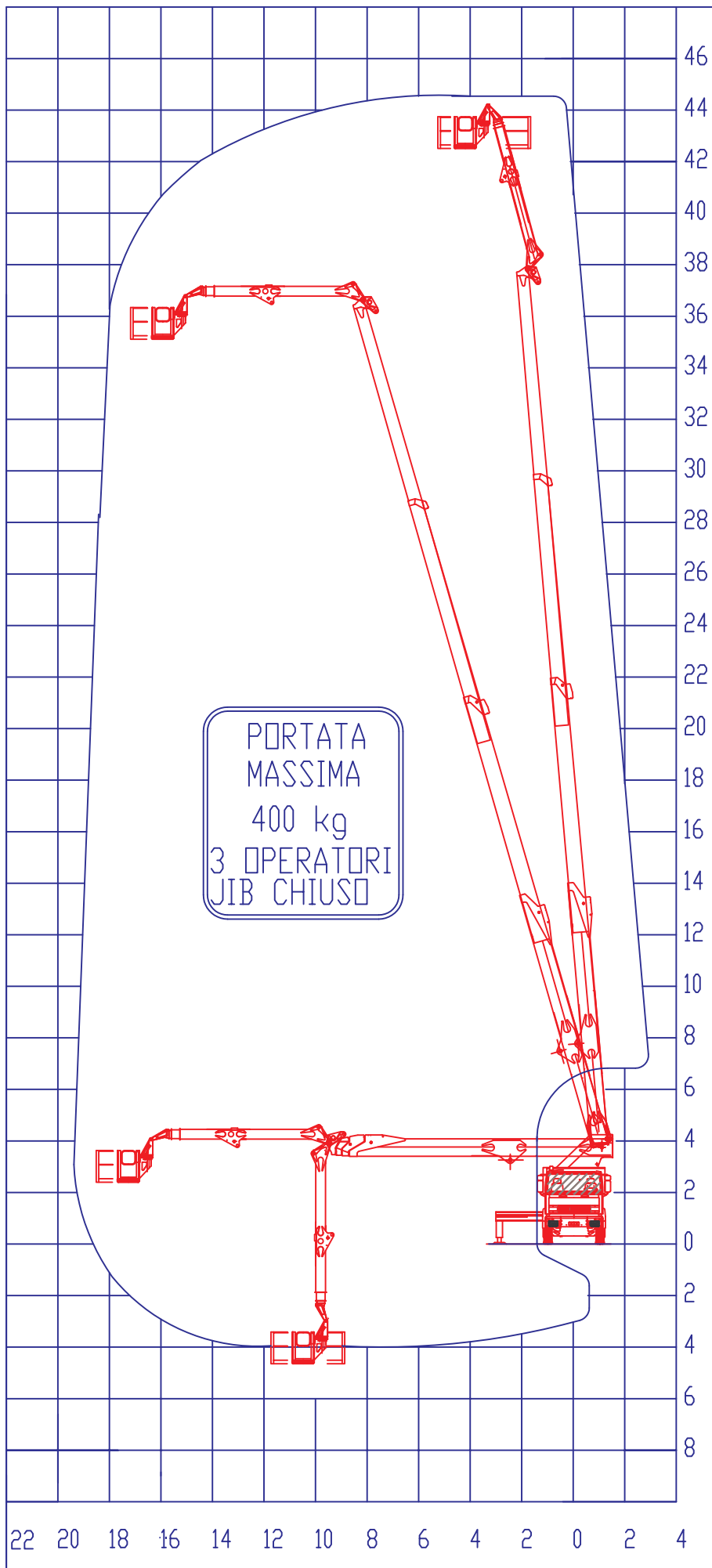


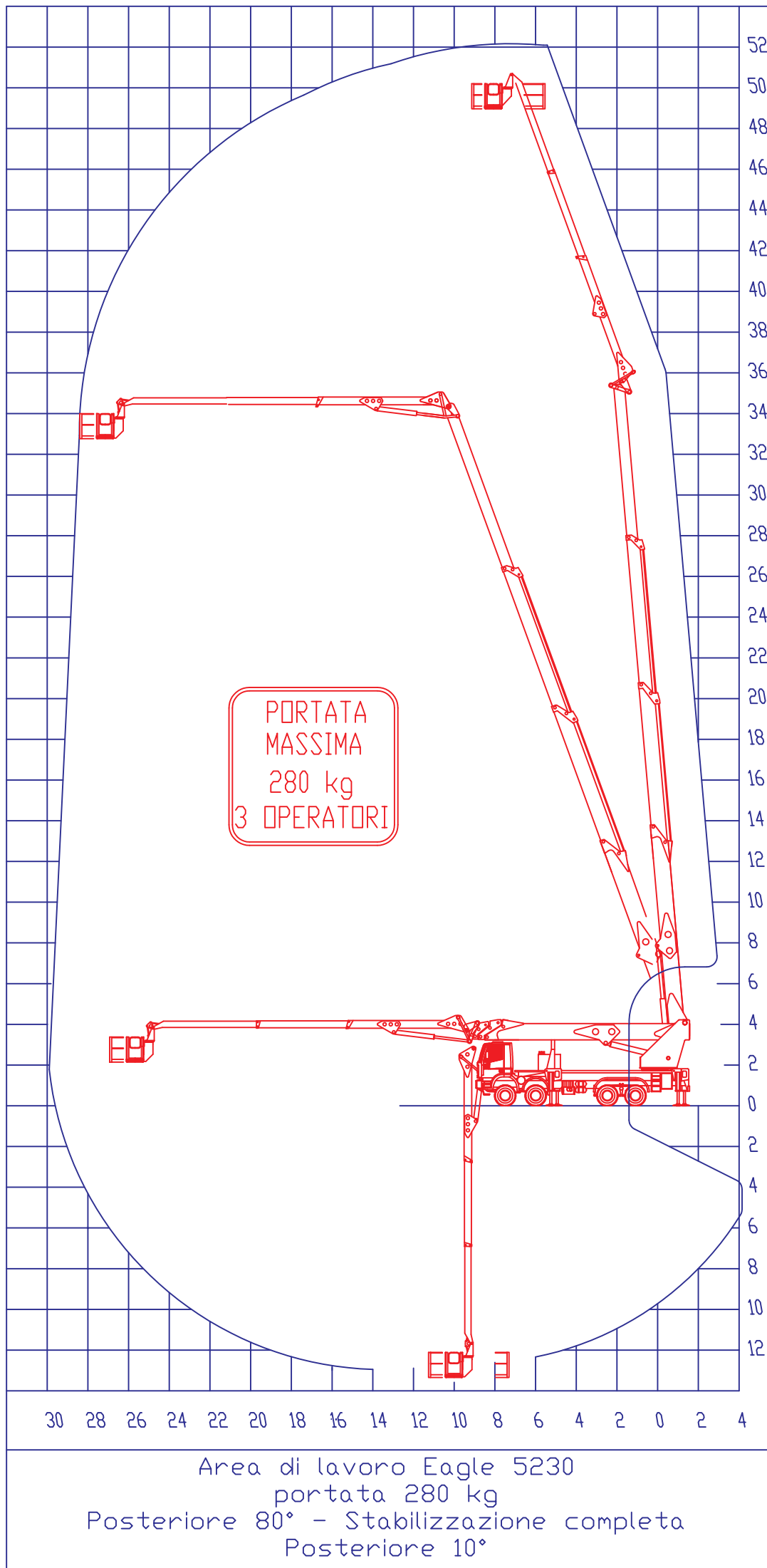
PORTATA
 MASSIMA
 280 kg
 3 OPERATORI

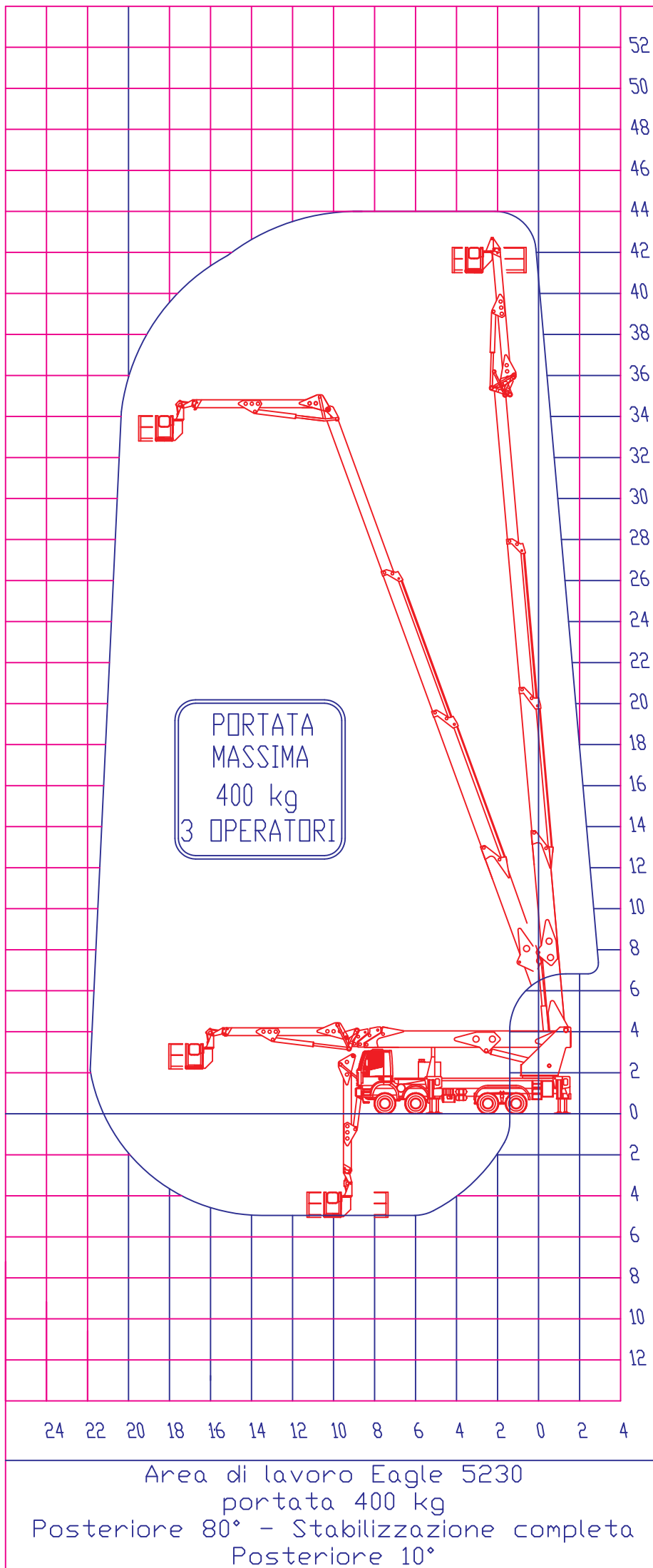
Area di lavoro Eagle 5230
 portata 280 kg
 Anteriore 10°
 Laterale - Stabilizzazione completa

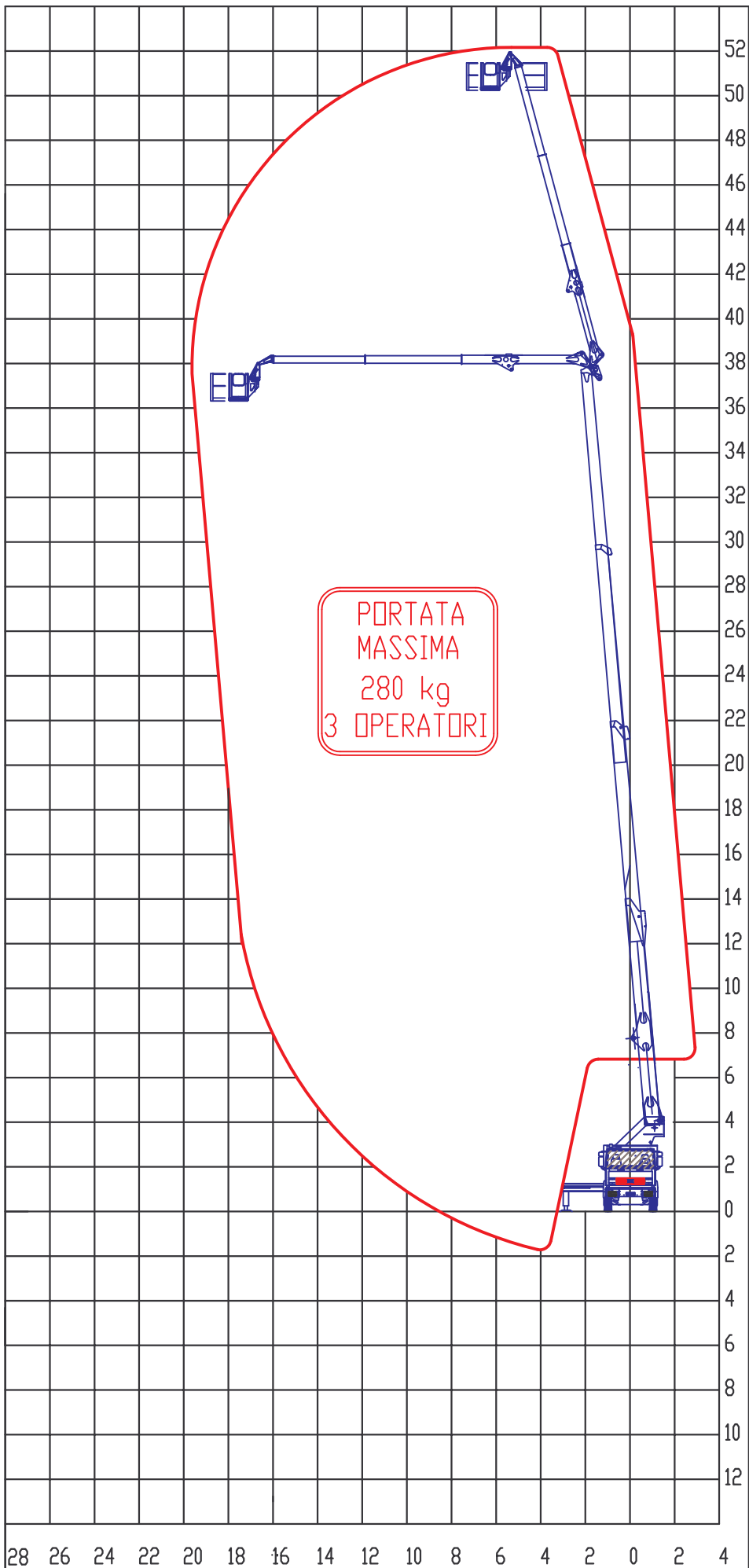


Area di lavoro Eagle 5230
portata 400 kg
Anteriore 10°
Laterale - Stabilizzazione completa



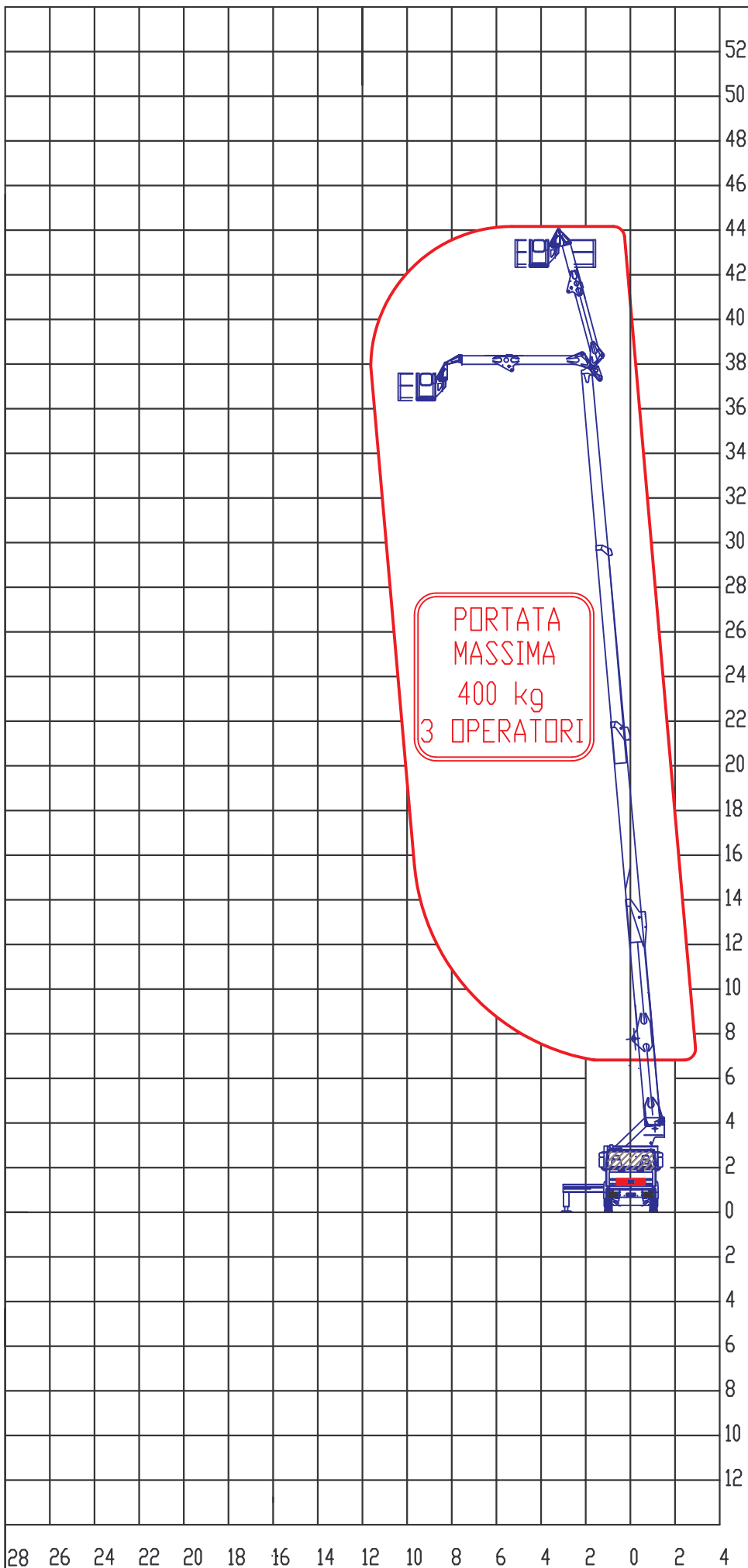






Area di lavoro Eagle 5230
portata 280 kg
Laterale - Stabilizzazione parziale
Posteriore 80° - Stabilizzazione parziale

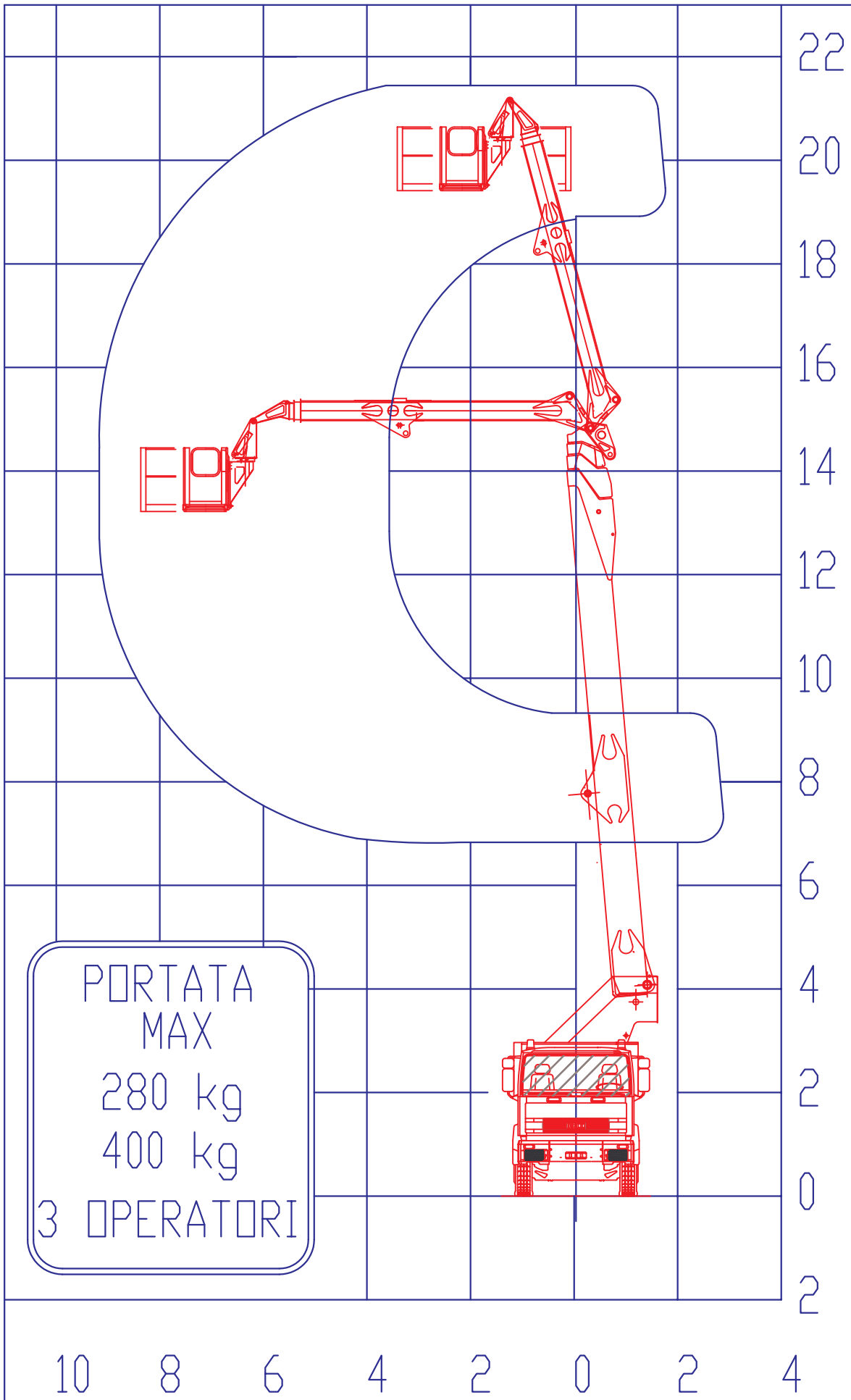




28 26 24 22 20 18 16 14 12 10 8 6 4 2 0 2 4

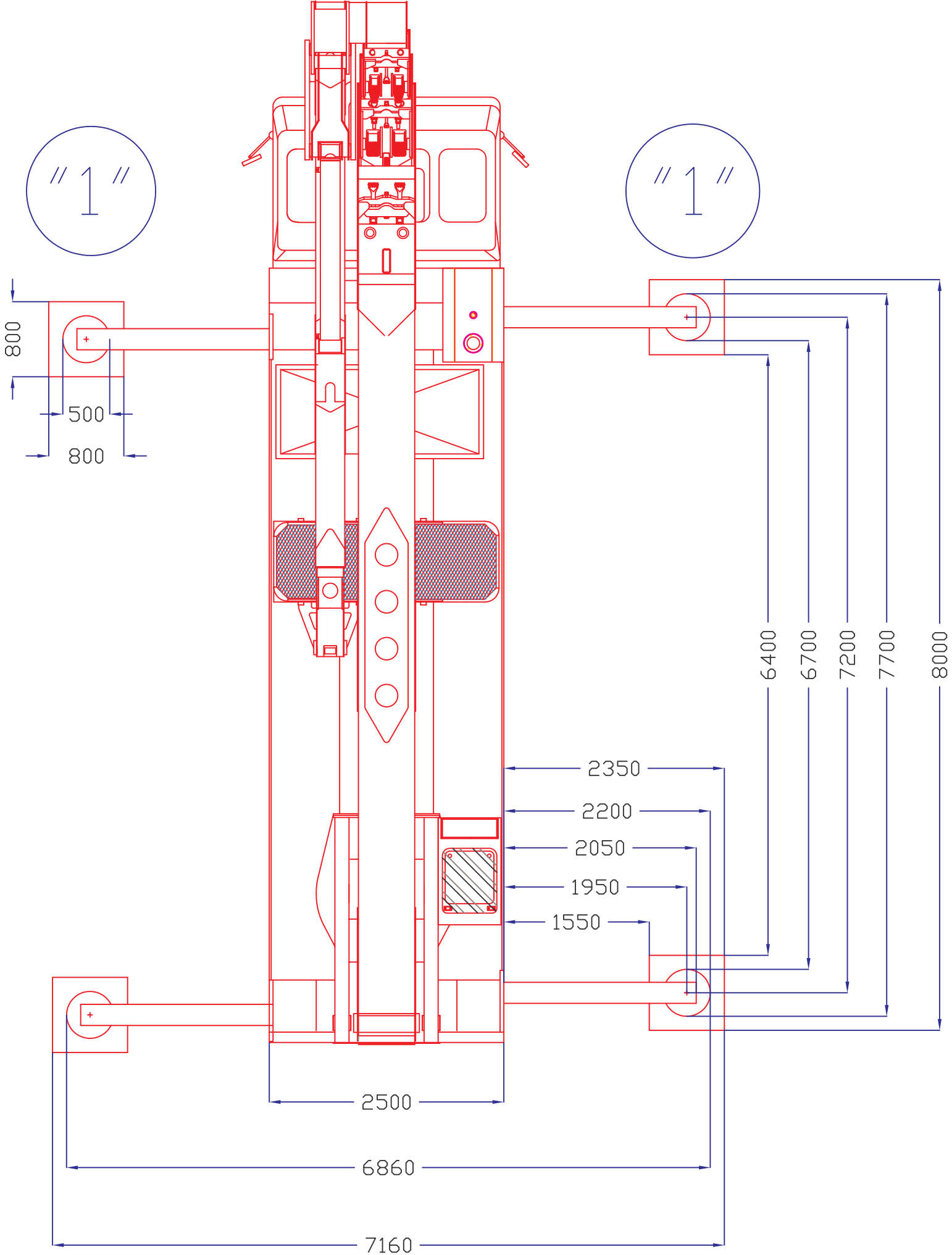
Area di lavoro Eagle 5230
 portata 400 kg
 Laterale - stabilizzazione parziale
 Posteriore 80° - stabilizzazione parziale



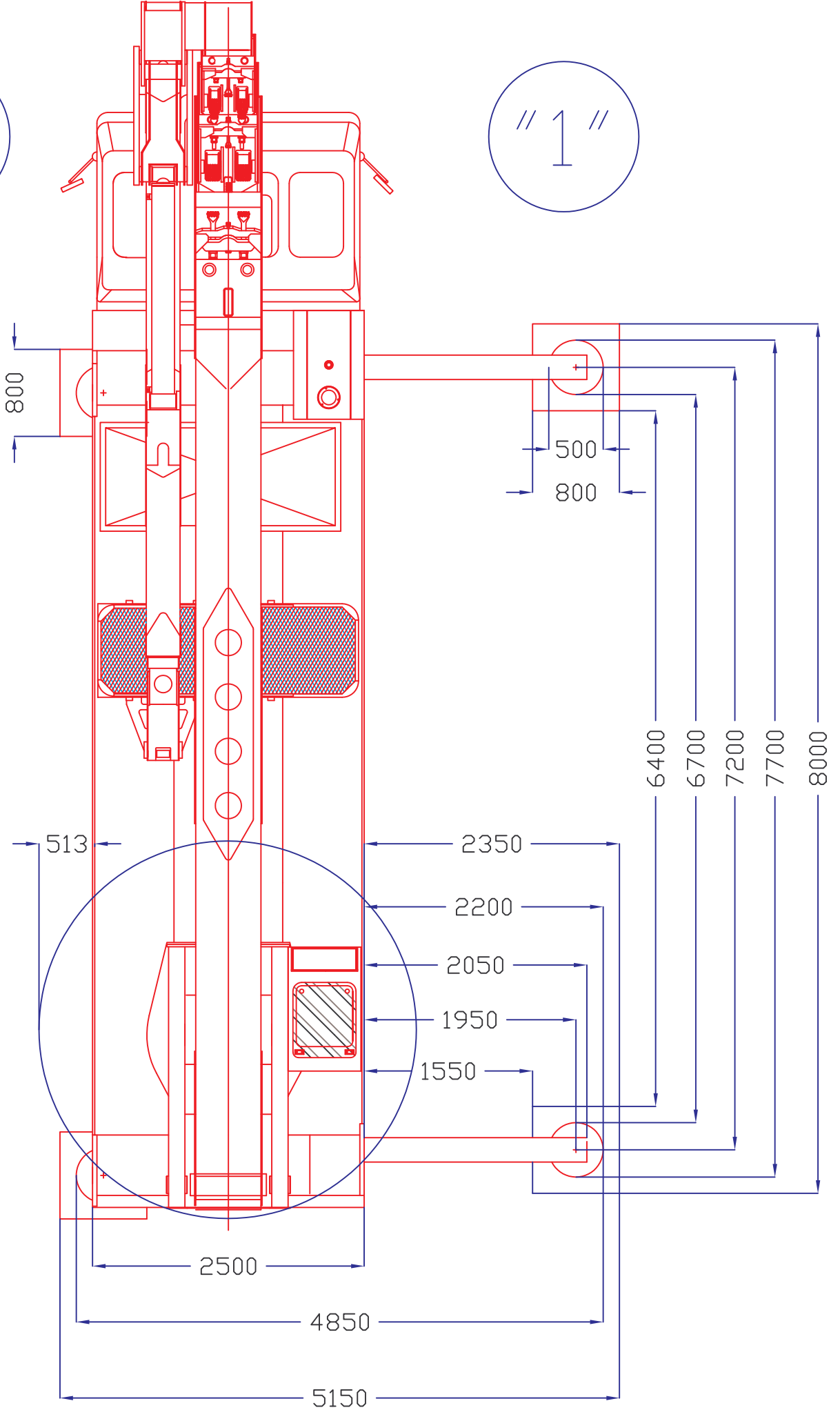
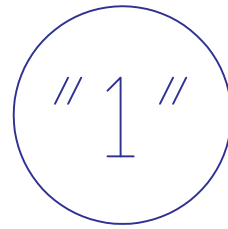
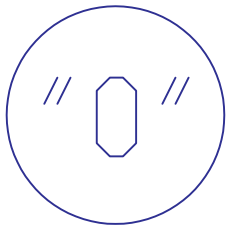


PORTATA
 MAX
 280 kg
 400 kg
 3 OPERATORI

Area di lavoro Eagle 5230
 portate 280 e 400 kg
 Laterale - Stabilizzazione chiusa
 Posteriore 80° - Stabilizzazione chiusa



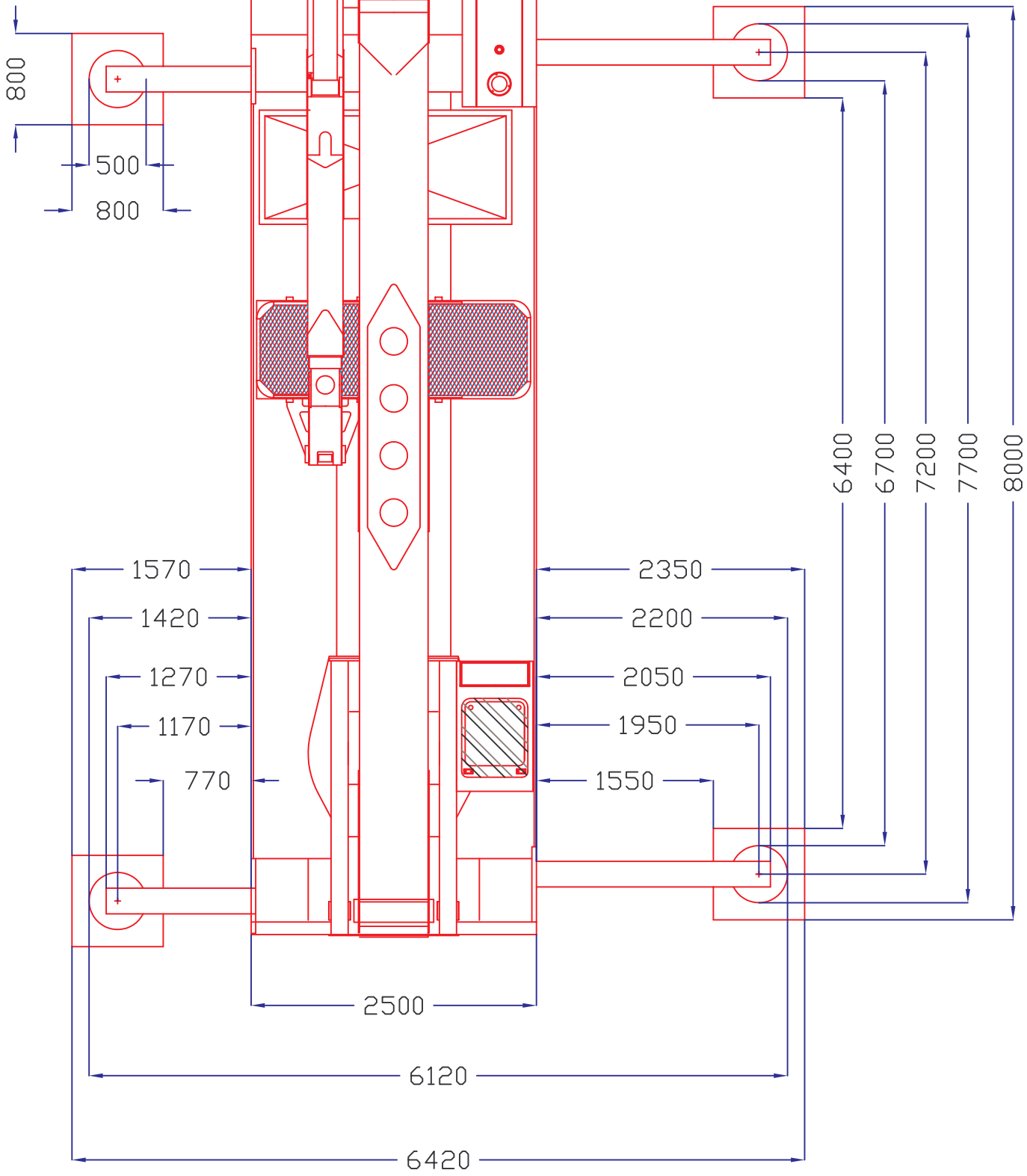
Piattaforma aerea Eagle 5230



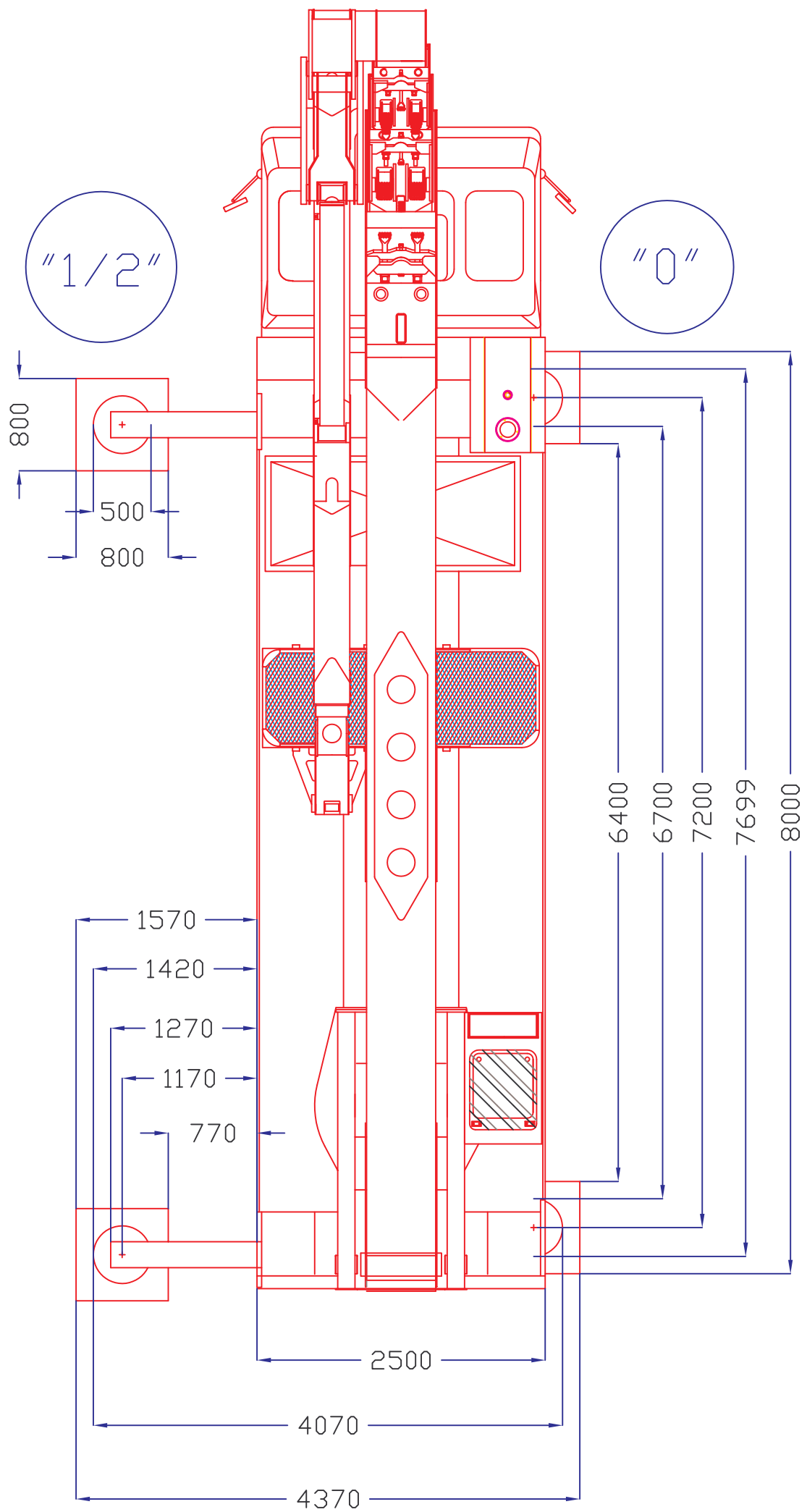
Piattaforma aerea Eagle 5230

"1/2"

"1"



Piattaforma aerea Eagle 5230



Piattaforma aerea Eagle 5230